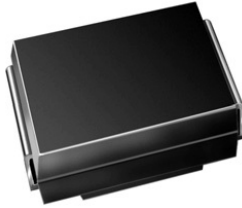


## High-Current Density Surface Mount Schottky Rectifier


**DO-214AA (SMB)**

| PRIMARY CHARACTERISTICS |                |
|-------------------------|----------------|
| $I_{F(AV)}$             | 4.0 A          |
| $V_{RRM}$               | 30 V, 40 V     |
| $I_{FSM}$               | 100 A          |
| $V_F$                   | 0.38 V, 0.42 V |
| $T_J \text{ max.}$      | 150 °C         |

### FEATURES

- Low profile package
- Ideal for automated placement
- Guardring for overvoltage protection
- Low power losses, high efficiency
- Very low forward voltage drop
- High surge capability
- Meets MSL level 1, per J-STD-020, LF maximum peak of 260 °C
- Solder dip 260 °C, 40 s
- Component in accordance to RoHS 2002/95/EC and WEEE 2002/96/EC


**RoHS**  
COMPLIANT

### TYPICAL APPLICATIONS

For use in low voltage high frequency inverters, freewheeling, dc-to-dc converters, and polarity protection applications.

### MECHANICAL DATA

**Case:** DO-214AA (SMB)

Epoxy meets UL 94V-0 flammability rating

**Terminals:** Matte tin plated leads, solderable per J-STD-002 and JESD22-B102

E3 suffix for consumer grade, meets JESD 201 class 1A whisker test, HE3 suffix for high reliability grade (AEC Q101 qualified), meets JESD 201 class 2 whisker test

**Polarity:** Color band denotes the cathode end

| MAXIMUM RATINGS ( $T_A = 25\text{ °C}$ unless otherwise noted)                     |             |               |       |            |
|--|-------------|---------------|-------|------------|
| PARAMETER  | SYMBOL      | SSB43L        | SSB44 | UNIT       |
| Device marking code  |             | 43L           | S44   |            |
| Maximum repetitive peak reverse voltage  | $V_{RRM}$   | 30            | 40    | V          |
| Maximum RMS voltage  | $V_{RMS}$   | 21            | 28    | V          |
| Maximum DC blocking voltage  | $V_{DC}$    | 30            | 40    | V          |
| Max. average forward rectified current at $T_L$ (Fig. 1)                           | $I_{F(AV)}$ | 4.0           |       | A          |
| Peak forward surge current 8.3 ms single half sine-wave superimposed on rated load | $I_{FSM}$   | 100           |       | A          |
| Voltage rate of change (rated $V_R$ )  | dV/dt       | 10 000        |       | V/ $\mu$ s |
| Operating junction temperature range   | $T_J$       | - 65 to + 150 |       | °C         |
| Storage temperature range  | $T_{STG}$   | - 65 to + 150 |       | C          |



| ELECTRICAL CHARACTERISTICS (T <sub>A</sub> = 25 °C unless otherwise noted) |                 |                         |                |        |      |       |      |      |
|--|-----------------|-------------------------|----------------|--------|------|-------|------|------|
| PARAMETER  | TEST CONDITIONS |                         | SYMBOL         | SSB43L |      | SSB44 |      | UNIT |
|  |                 |                         |                | TYP.   | MAX. | TYP.  | MAX. |      |
| Maximum instantaneous forward voltage <sup>(1)</sup>                       | 4.0 A           | T <sub>J</sub> = 25 °C  | V <sub>F</sub> | 0.43   | 0.45 | 0.45  | 0.49 | V    |
|  |                 | T <sub>J</sub> = 125 °C |                | 0.33   | 0.38 | 0.37  | 0.42 |      |
| Maximum reverse current at rated V <sub>R</sub> <sup>(2)</sup>             |                 | T <sub>J</sub> = 25 °C  | I <sub>R</sub> | -      | 0.6  | -     | 0.4  | mA   |
|  |                 | T <sub>J</sub> = 125 °C |                | 35     | 45   | 25    | 40   |      |

**Notes:**

(1) Pulse test: 300 μs pulse width, 1 % duty cycle

(2) Pulse test: Pulse width ≤ 40 ms

| THERMAL CHARACTERISTICS (T <sub>A</sub> = 25 °C unless otherwise noted) |                  |        |       |      |
|---|------------------|--------|-------|------|
| PARAMETER   | SYMBOL           | SSB43L | SSB44 | UNIT |
| Typical thermal resistance <sup>(1)</sup>                               | R <sub>θJA</sub> | 70     |       | °C/W |
|   | R <sub>θJL</sub> | 23     |       |      |

**Note:**

(1) Aluminum substrate mounted

| ORDERING INFORMATION (Example) |                 |                        |               |                                    |
|--------------------------------|-----------------|------------------------|---------------|------------------------------------|
| PREFERRED P/N                  | UNIT WEIGHT (g) | PREFERRED PACKAGE CODE | BASE QUANTITY | DELIVERY MODE                      |
| SSB43L-E3/52T                  | 0.096           | 52T                    | 750           | 7" diameter plastic tape and reel  |
| SSB43L-E3/5BT                  | 0.096           | 5BT                    | 3200          | 13" diameter plastic tape and reel |
| SSB43LHE3/52T <sup>(1)</sup>   | 0.096           | 52T                    | 750           | 7" diameter plastic tape and reel  |
| SSB43LHE3/5BT <sup>(1)</sup>   | 0.096           | 5BT                    | 3200          | 13" diameter plastic tape and reel |

**Note:**

(1) Automotive grade AEC Q101 qualified

## RATINGS AND CHARACTERISTICS CURVES

(T<sub>A</sub> = 25 °C unless otherwise noted)

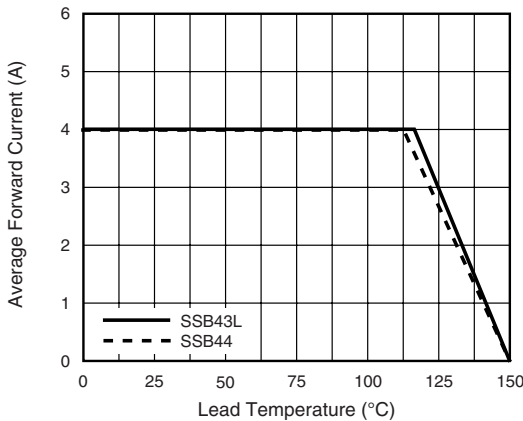


Figure 1. Forward Current Derating Curve

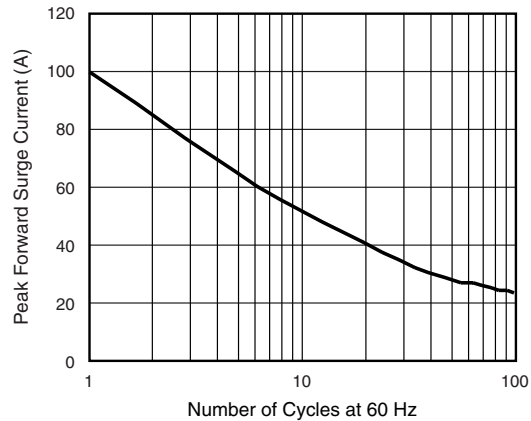


Figure 2. Maximum Non-Repetitive Peak Forward Surge Current

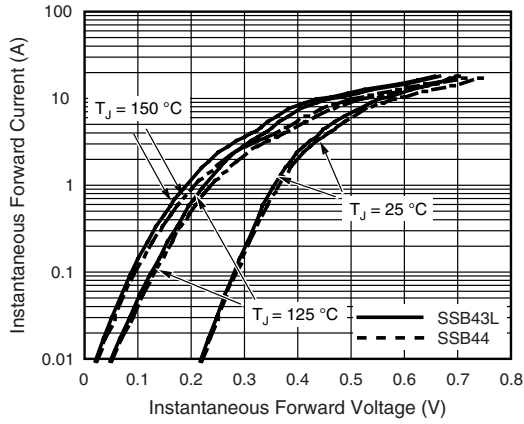


Figure 3. Typical Instantaneous Forward Characteristics

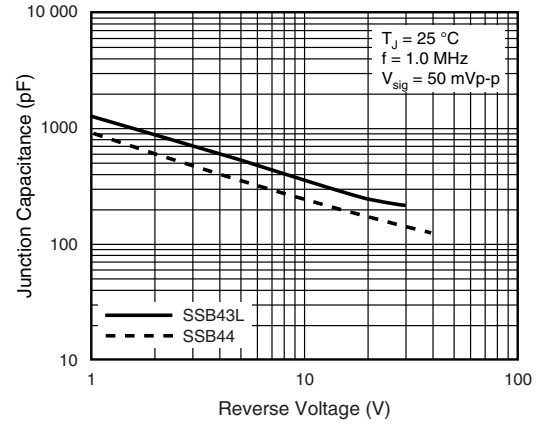


Figure 5. Typical Junction Capacitance

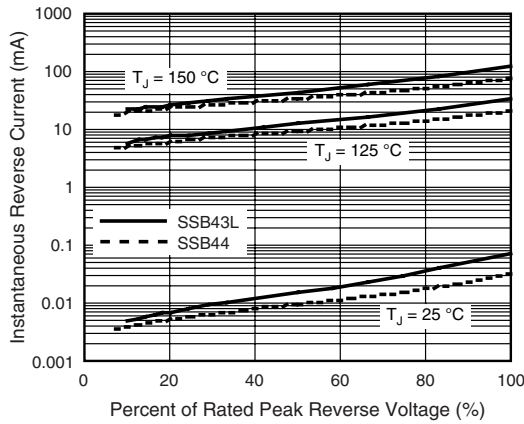


Figure 4. Typical Reverse Characteristics

### PACKAGE OUTLINE DIMENSIONS in inches (millimeters)

